

move in today!

The business center at 45 Rockefeller Plaza, one of the most renowned commercial addresses in the world, offers magnificent views of Midtown Manhattan's east and west sides, and Rockefeller Center and is within steps of St. Patrick's Cathedral, Radio City Music Hall, Fifth Avenue and Times Square. Each office suite features refined decor, is fully-furnished, and comes with all the professional support and services you need. We provide serviced, temporary office space, Virtual Office Plans and conference centers to discerning companies wishing to take advantage of the prestige of this highly desirable location and address.

#### Office Accommodations

- > Flexible Terms
- > Furnished Private Offices
- > Space Ranging from 85 Sq. Ft to 235 Sq. Ft.
- > Virtual Office Support Facilities
- > Fully-appointed Lobby and Common Areas

#### Serviced Office Environmental Features

- > Staffed Reception
- > On-site Business Center Office Management
- > Fully-equipped Kitchen with Beverage Service
- > Full Service Copy Center
- > Multiple On-Site Conference Rooms
- > 24/7 Secured Access
- > Located in the Rockefeller Center Complex

#### Professional Support Staff

- > On-call Voice and Data Support
- > Personalized Phone Answering
- > Visitor Reception and Greeting Service
- > "As Needed" Business Support Services
- > Mail & Shipping Services

#### Technology

- > Unified Messaging
- > Cisco 7960 IP Phones with Dedicated Circuitry
- > Multiple Voice and Data Ports
- > Scaleable Internet Bandwidth
- > Personal Online Phone Management
- > Network and IT Support
- > Audio/Visual Equipment Available

#### Contact

Margaret M. Myhan  
General Manager  
212-332-3400  
margaret@rgbc.com



Reception area

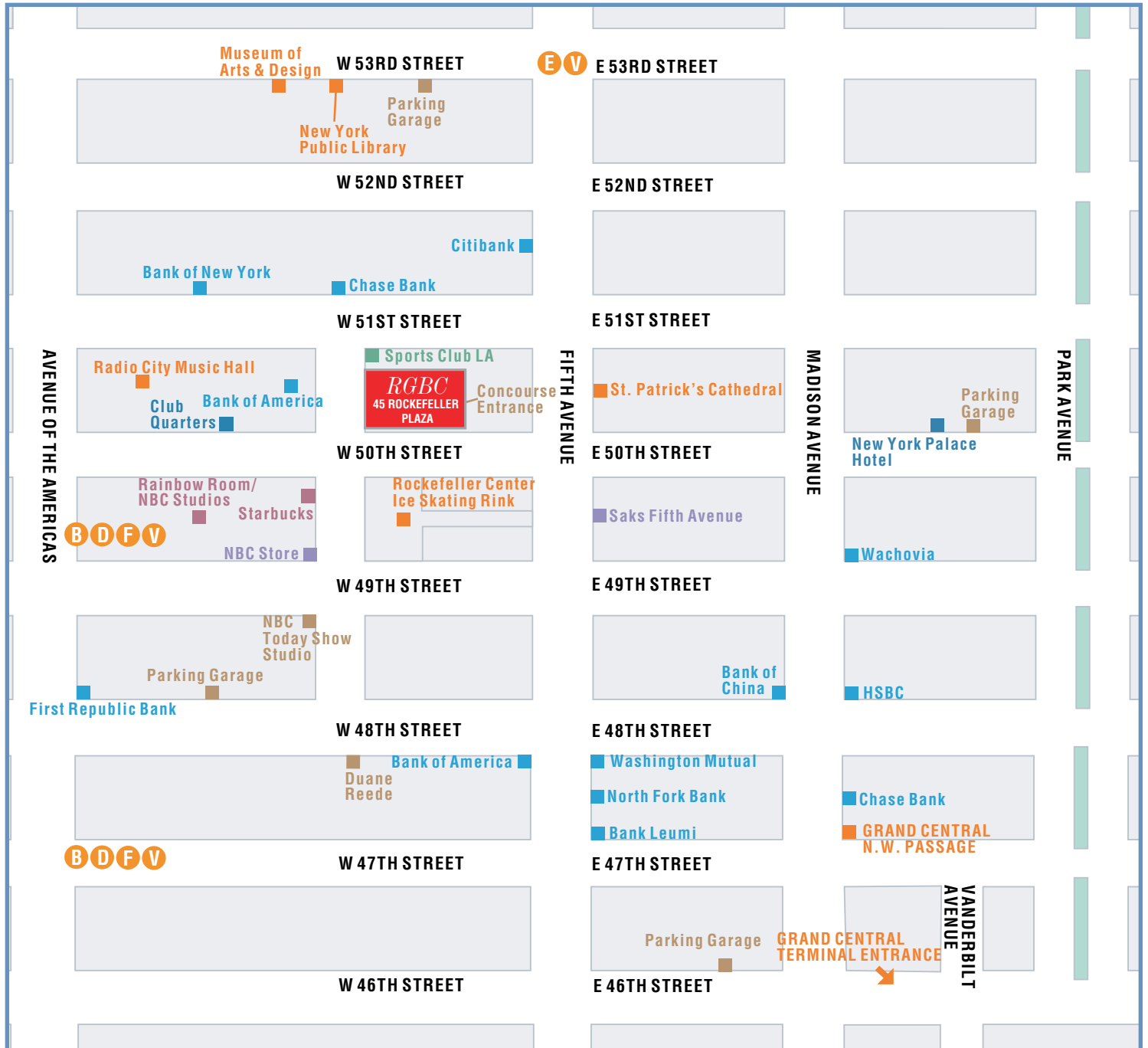


Conference room



Typical office

area map



**Contact**  
Margaret M. Myhan  
General Manager  
212-332-3400  
margaret@rgbc.com

**LEGEND**

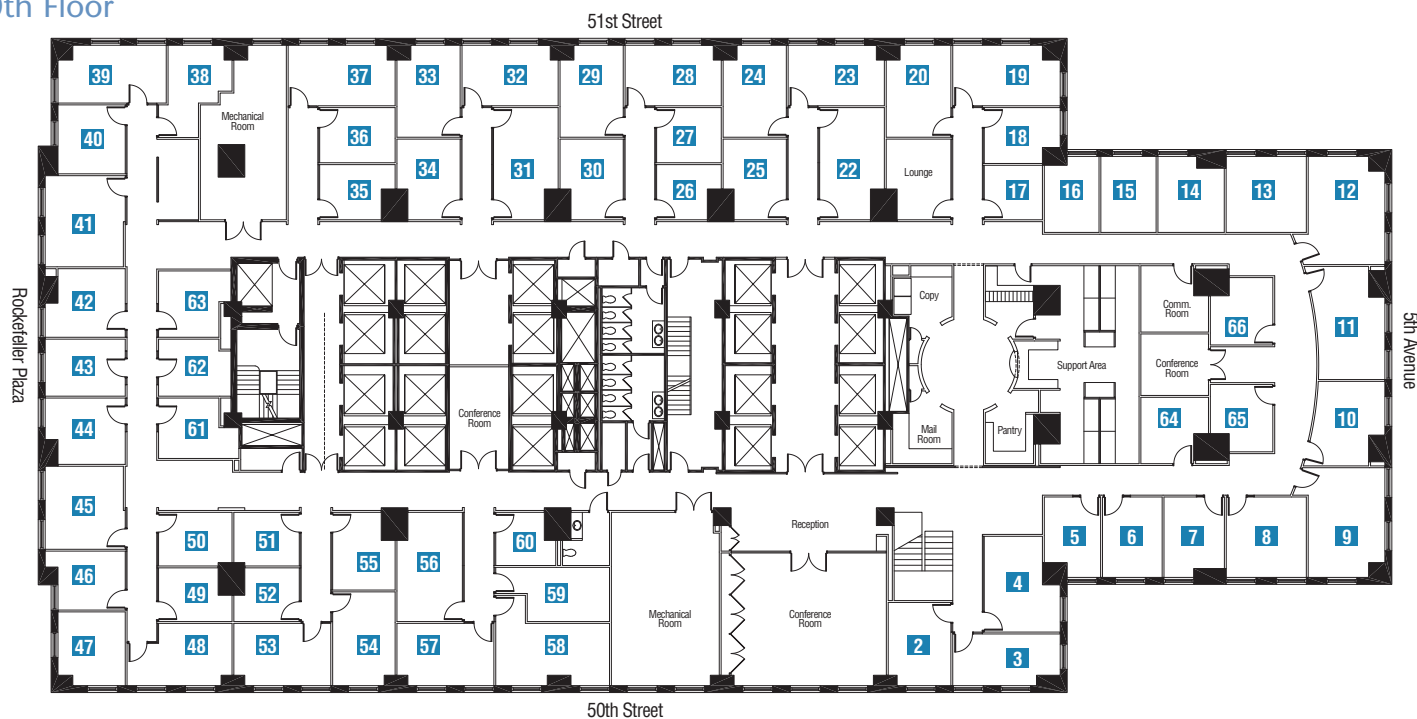
- Points of Interest
- Bank/Finance
- Food/Dining
- Retail
- Hair/Nail Salon/Spa
- Fitness
- Hotel
- Others

**SUBWAYS**

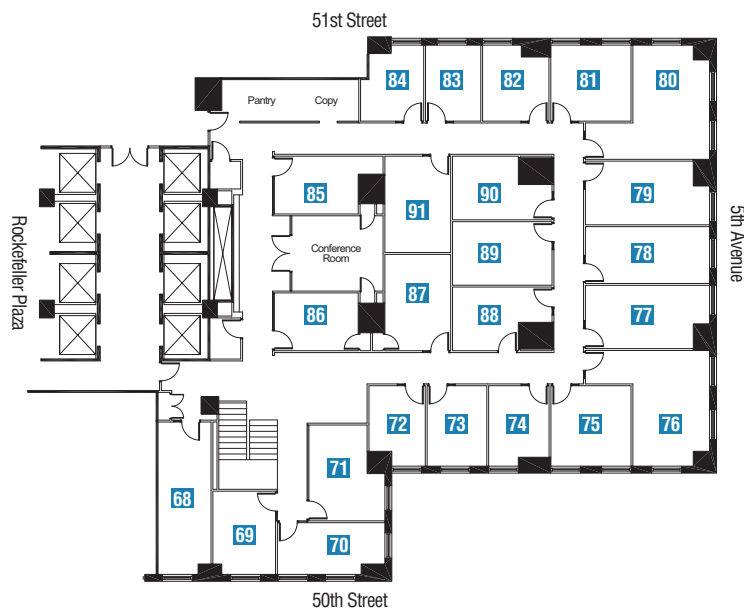
- N R W B D F V 4 5 6 7 S

floor plans

20th Floor



21st Floor



Contact

Margaret M. Myhan  
General Manager  
212-332-3400  
margaret@rgbc.com